



US / CAN 2026-2027 CATALOG
FOXMIND GAMES



CONTACT SALES

T: 1.514.369.7777

T: 1.866.FOX.MIND

E: sales@foxmind.com

.....

CONTACT MEDIA

T: 1.514.369.7777

E: marketing@foxmind.com

.....

CONTACT HEAD OFFICE

E: info@foxmind.com

W: foxmind.com

5530 St-Patrick, Suite 1104
Montreal, QC H4E 1A8
Canada

FoxMind®

We at FoxMind are excited to present our Catalog! Our family of products spans several categories, yet like any true family, all our games share a common DNA that makes a FoxMind toy or game unique, recognizable, and, for many, lovable.

All our games are conceived to be easy to learn, quick to play, fun, and always smart. This combination has made our toys and games beloved by parents, teachers, children, and players around the world, earning us multiple awards in many countries.

Whether it's a game for family gatherings, a children's game, or a strategy challenge, we strive to blend smart and fun—staying true to our motto of being "The Smarter Fun Company."

We want to thank our retailers, reps, distributors, and, of course, the players who have supported us for over 20 years, allowing us to keep doing the work we love.

Thank you!

The Foxes at FoxMind Toys and Games



MATCH MADNESS®

Success runs in the family!



More Details
Page 6

TABLE OF CONTENTS

FAMILY GAMES

5

- 6 Match Madness
- 7 Match Madness Flip
- 8 Match Madness Junior
- 9 Match Madness Duo
- 10 Match Madness Extreme
- 11 Conezilla/Chocoly
- 12 Churro Lingo **NEW!**
- 13 Icing on the Cake/Donuts by the Dozen
- 14 Swish
- 15 Marble Garble
- 16 Disruptus / Memo Rush

EDUCATIONAL GAMES

35

- 36 Mystero **NEW!**
- 37 Architecto / Equilibrio
- 38 By the Book

IMPULSE

17

- 18 Speedy Words / Speedy Words Peggable PDQ
- 19 Lucky Jack
- 20 Slam Words

STRATEGY GAMES

39

- 40 Blast Track
- 41 Sports Dice Series
- 42 Manhattan / Potion

PARTY GAMES

21

- 22 ChickenBall **NEW!**
- 23 Jungle Speed Eco **NEW!**
- 24 Breaking News **NEW!**
- 25 Slanguage
- 26 Presto/Crazy Farm

CANADIAN DISTRIBUTION

43

- 44 Outfoxed **NEW!**
- 45 Explora

CHILDREN GAMES

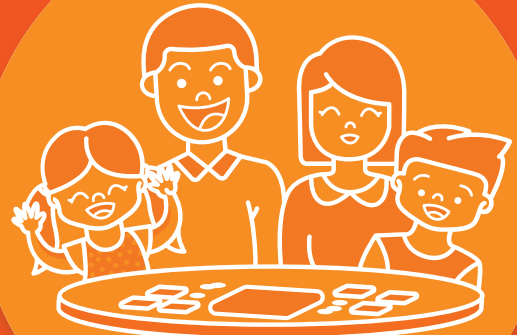
27

- 28 Don't Rock the Croc
- 29 Lunch Crunch **NEW!**
- 30 Treasure of the Dragons
- 31 Can of Worms
- 32 Chickadoo
- 33 Alice / Hansel & Gretel / Cinderella
- 34 The Little Firefighters **NEW!**

GAME SPECIFICATIONS

46

FAMILY GAMES





Watch How To Play



MATCH MADNESS®

Let the furious fun begin! Players sprint to arrange a set of 5 blocks so that they match a pattern shown on a card. First player to succeed grabs the card and a new matching race starts. Tensions rise as you scramble to outpace and outsmart your opponents in this ingenious game of perception. So fire-up your neurons and be transported by Match Madness!

- A worldwide best-seller and award winner.
- A fun, fast-paced dexterity game.
- New edition including 60 digital bonus puzzles.



Product Code: MATCH-BIL
Box Size: 10.12 L x 10.12 H x 1.85 D (1.7 LBS)
Carton Size: 10.83 L x 12.40 H x 10.83 D (11.24 LBS)
Units/carton: 6





Watch How To Play



MATCH MADNESS® FLIP

Take Match Madness Flip wherever you go!

Race to match the pattern on the card to win! This travel edition features 100 brand-new puzzles & a convenient travel bag for on-the-go fun.

- Travel friendly version of Match Madness.
- Waterproof, durable and compact.
- 60 game cards plus 40 digital puzzles.



Product Code: 40025
 Box Size: 3.7 L x 8.46 H x 0.79 D (0.42 LBS)
 Carton Size: 8.86 L x 4.17 H x 5.31 D (6.08 LBS)
 Units/carton: 6





Watch How To Play



MATCH MADNESS® JUNIOR

Younger children can enjoy all the fun of Match Madness with the new blocks of the Junior version. The game has adapted game rules for ages 4+ with each player getting a set of 4 blocks. The game includes 48 progressive puzzles in 4 different levels of difficulty. Let the little ones enjoy all the fun of Match Madness!

- A fun introduction to Match Madness.
- 48 progressive puzzles to play & learn.
- New game mode to share the fun!



Product Code: MATCHJR-BIL
Box Size: 10.24 L x 10.24 H x 1.97 D (1.48 LBS)
Carton Size: 11.02 L x 11.02 H x 12.60 D (10.36 LBS)
Units/carton: 6





Watch How To Play



MATCH MADNESS® DUO

Experience the Match Madness thrills at its peak! Duo is a matching game for fast thinkers! Be quick to recreate a pattern on a card with your set of 5 blocks! Perfect dual fun for up to 2 players! The game includes 60 challenges with 3 levels of difficulty.



- 60 expert challenges for 2 players.
- 3 Levels from easy to difficult.
- Fast paced and lots of action!



Product Code: MATCHDUO-BIL
 Box Size: 8.66 L x 8.66 H x 1.57 D (1.26 LBS)
 Carton Size: 10.63 L x 9.65 H x 9.45 D (8.38 LBS)
 Units/carton: 6





MATCH MADNESS® EXTREME



Attain new heights of smart, frantic play with the Match Madness Extreme expansion pack. 4 cubic blocks and 60 new ingenious challenges will defy players of any level to find the right solution.

* You need the Match Madness base game to play with the expansion.

- Double the challenges, double the fun!
- Adds a new difficulty level with 3D cubes.
- Develops logic, observation and dexterity.



Product Code: MATCHEXT-BIL
Box Size: 4.72 L x 4.72 H x 4.72 D (2.56 LBS)
Carton Size: 14.96 L x 10.24 H x 5.12 D (4.3 LBS)
Units/carton: 6





CONEZILLA®

Be the first player to collect 10 mouth-watering ice cream scoops and be the winner of the spectacular Conezilla game. This fun game of tactics and memory will have children and adults rallying for second and third calorie-free servings. A perfect yummy game for the brain!

*ENGLISH ONLY

- Fun for kids and adults alike.
- Learn basic numbers from 1 to 49.
- Great memory and deduction game.



Product Code: CNZLA-EN

Box Size: 3.74 L x 9.06 H x 1.77 D (0.66 LBS)

Carton Size: 8.54 L x 10.04 H x 6.22 D (4.41 LBS)

Units/carton: 6



CHOCOLY®

Build the largest area of your favorite kind of chocolate bar by connecting chocolate tiles and by blocking your opponents! Plan your moves ahead and outsmart the other players for a sweet victory! Players will ask for second servings of this yummy game of logic.

- An ideal game for chocolate lovers.
- Easy to learn, easy to play.
- Great for logic and observation.



Product Code: CHOCO-BIL

Box Size: 3.74 L x 9.06 H x 1.77 D (0.66 LBS)

Carton Size: 9.45 L x 6.30 H x 8.27 D (5.51 LBS)

Units/carton: 6





CHURRO LINGO

Flip churro letters, snap them into tasty words, and outsmart your rivals. Mess-free and no sticky fingers! Just endless fun that keeps everyone coming back for more!

- A yummy game with a delightful gameplay.
- Sturdy plastic free game pieces.
- Develops vocabulary and logic.



Product Code: 10100
Box Size: 3.74 L x 9.06 H x 1.77 D (0.79 LBS)
Carton Size: 9.72 L x 6.30 H x 8.27 D (5.2 LBS)
Units/carton: 6



ICING ON THE CAKE



Baking has never been so easy! Players with a sweet tooth and an appetite for strategy games will be in for a treat! Let your cake rise to victory in this heated family bake-off!

- Create your own colorful cake with 3D candles!
- Light strategy with many ways to win.
- Develops spatial logic and planning.



Product Code: CAKE-BIL
 Box Size: 7.17 L x 9.57 H x 2.45 D (1.43 LBS)
 Carton Size: 10.63 L x 10.04 H x 7.68 D (6.61 LBS)
 Units/carton: 4



DONUTS BY THE DOZEN®

Flip some delicious donuts to reach the number 12! Sharp minds will aim for a sweet victory by combining different donut flavors to get their dozen first. Add some sugar-loving bees to the frenzy as they are eager to get a taste!

- Plays with up to 5 other friends!
- Great way to work on problem resolution and mental calculation techniques.
- Easy to learn, a delight to play!

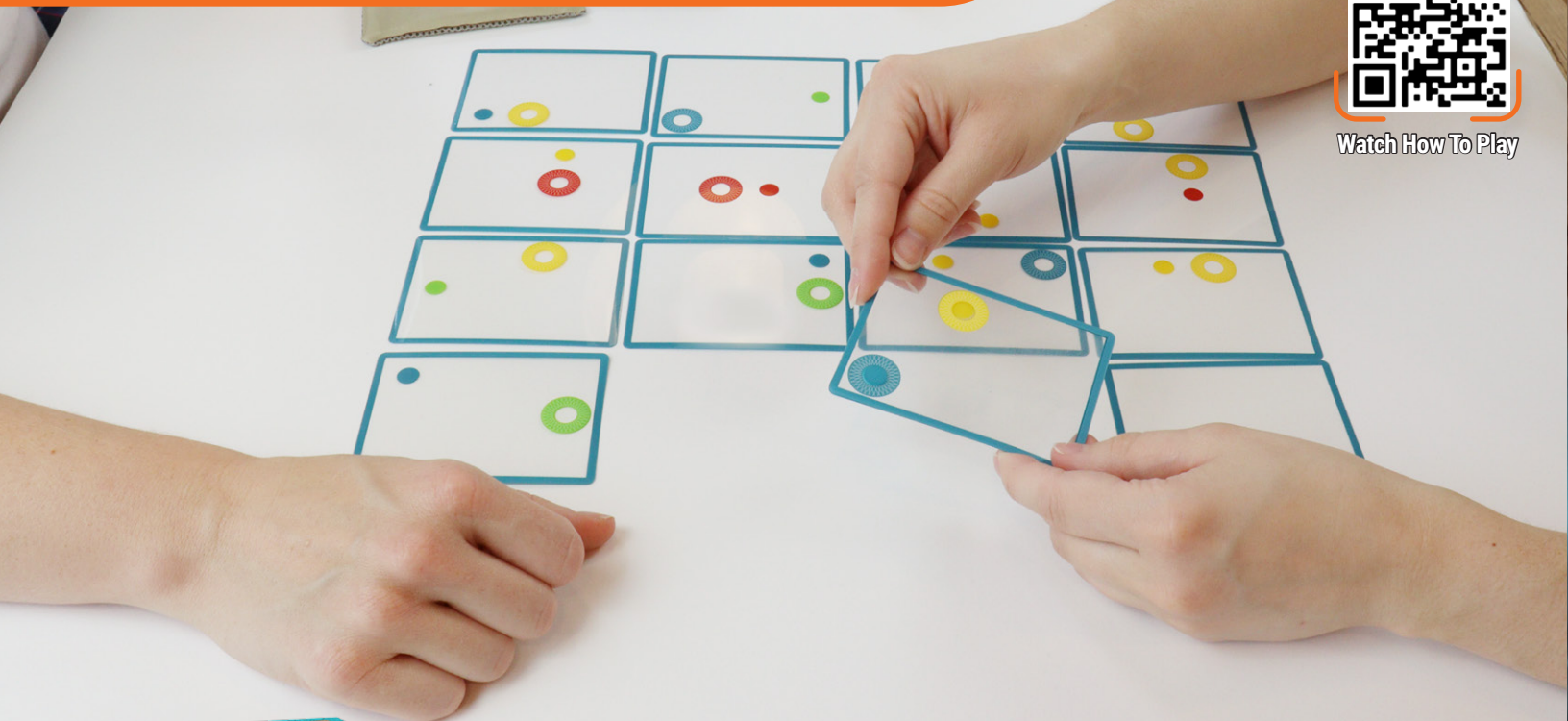


Product Code: 10050
 Box Size: 3.74 L x 9.06 H x 1.77 D (0.75 LBS)
 Carton Size: 9.72 L x 6.30 H x 8.27 D (5.95 LBS)
 Units/carton: 6





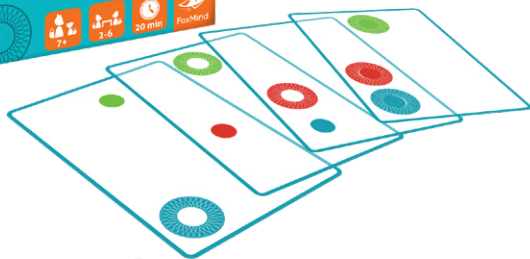
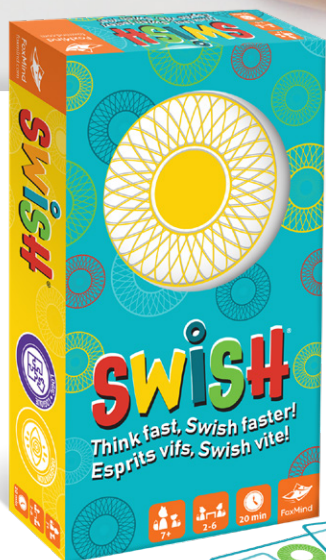
Watch How To Play



SWISH®

Outsmart your opponents by making the perfect Swish! Look for cards with matching hoops and balls. Align the cards by stacking and rotating them so each ball lands perfectly in a hoop. The more cards you link in a single Swish, the closer you are to winning!

- Fun on the go! Travel bag included.
- Play in duo or with the entire family.
- Develops logic and speed.



8 42710 00229 1

Product Code: 10075
Box Size: 4.33 L x 7.87 H x 1.57 D (0.51 LBS)
Carton Size: 10.04 L x 9.06 H x 5.31 D (3.5 LBS)
Units/carton: 6



7+



2-6



20 min



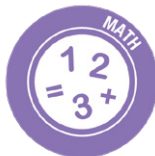
Watch How To Play



MARBLE GARBLE®

Lift the tray and watch the colorful marbles magically roll onto the playing board. Use dexterity, patience and wits to place the marbles according to the challenge card by tilting the board. Four play levels will keep your family and friends challenged and asking for more. Whether you play Marble Garble alone or frantically compete with others, action-filled fun is assured.

- A unique dexterity game for all ages.
- Compact toy that can be stored in seconds.
- Progressive brainteaser challenges.



Product Code: 10000
 Box Size: 9.57 L x 9.57 H x 1.38 D (1.43 LBS)
 Carton Size: 10.24 L x 9.57 H x 10.24 D (9.26 LBS)
 Units/carton: 6



FAMILY GAMES



Product Code: DISRUPTUS-BIL
Box Size: 5.12 L x 5.12 H x 3.82 D (1.1 LBS)
Carton Size: 12.2 L x 11.02 H x 5.71 D (7.72 LBS)
Units/carton: 6



DISRUPTUS®

Dare to think in an outrageously original manner with DISRUPTUS™, the game featured in the New York Times, which is all about creativity and innovation. Featuring a simple and ingenious play mechanism, DISRUPTUS revolves around new ways to CREATE, TRANSFORM, or IMPROVE ideas or objects.

- Develops creativity and imagination.
- Perfect game for team building activities.
- Great for parties and family game nights.

MEMO RUSH®

Get your memory racing for the right characters in this game full of emotions! Players simultaneously tap cards matching either a specific character, a color or one of 9 different emotions. Memo Rush Improves visual perception, memory and emotion recognition.

- Develops memory, speed and social skills.
- Characters with 6 different emotions.
- Easy game rules and quick to play.



Product Code: MEMORU-BIL
Box Size: 7.76 L x 9.72 H x 2.24 D (1.23 LBS)
Carton Size: 14.57 L x 10.63 H x 8.66 D (8.44 LBS)
Units/carton: 6



IMPULSE GAMES



IMPULSE GAMES



Product Code: SPEEDYNEW-EN
Box Size: 4.13 L x 4.13 H x 1.85 D (0.2 kg)
Carton Size: 8.86 L x 8.86 H x 6.69 D (2.9 kg)
Units/carton: 12



SPEEDY WORDS® PEGGABLE

- New peggable packaging.
- Comes in a 6-pack tear-away PDQ.
- Same components, same fun gameplay!



Product Code: 10011
Box Size: 3.70 L x 8.43 H x 0.75 D (0.14 kg)
PDQ Size: 3.86 L x 8.62 H x 4.69 D (0.84 kg)
Carton Size: 5.51 L x 9.84 H x 4.72 D (1.10 kg)
Units/carton: 6





Watch How To Play



LUCKY JACK™

Lucky Jack requires players to use strategy to guess the intentions of the other players. Suspense, chance and risk taking form an explosive cocktail that will enliven your evenings with family and friends.

- An accessible game for the entire family.
- Offers a blend of strategy and luck
- Beautiful artwork by artist Jay Fletcher.



Product Code: 30005
 Box Size: 5.83 L x 3.90 H x 1.18 D (0.24 kg)
 Carton Size: 8.66 L x 4.33 H x 6.30 D (1.50 kg)
 Units/carton: 6





Watch How To Play



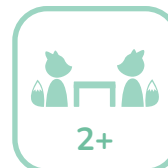
SLAM WORDS®

Play the shake and slam word-search game! Shake the cup, slam it shut to reveal 3 letters. Quickly find a word that uses the three letters and pass the cup to the next player who has to find a new word, or they are out. Highly portable for fun anywhere.

- No pieces to loose.
- Comes in a 6-pack tear-away PDQ.
- Play anywhere on the go.



Product Code: SWORDNEW-EN
 Box Size: 5.31 L x 7.76 H x 1.18 D (0.15 kg)
 PDQ Size: 5.75 L x 8.07 H x 7.87 D (0.90 kg)
 Carton Size: 10.63 L x 7.48 H x 7.87 D (1.95 kg)
 Units/carton: 6



PARTY GAMES



PARTY GAMES



CHICKENBALL™



The fast-and-furious party game where a chicken soars and laughter roars. ChickenBall has it all!

- A speed game that flies high!
- Develops observation and dexterity.
- A quick and easy to play for the whole family.



Product Code: 50020
Box Size: 5.9 L x 8.9 H x 1.97 D (0.68 LBS)
Carton Size: 12.6 L x 6.7 H x 9.6 D (5.86 LBS)
Units/carton: 6





Watch How To Play



JUNGLE SPEED ECO®

Do you have good reflexes and a good sense of observation? Jungle Speed is the perfect game to test them! A totem is placed in the center of the table. When there are two cards visible with identical symbols, the two players who have them enter a duel. The first one to grab the totem gives his/her cards to the other.

- An accessible game the whole family can enjoy.
- Comes with a convenient bag for on-the-go play.
- Over 10 million copies sold worldwide!



Product Code: JSECO-BIL
 Box Size: 3.25 L x 8.25 H x 3.25 D (0.7 LBS)
 Carton Size: 7 L x 8.8 H x 10.4 D (4.5 LBS)
 Units/carton: 6



PARTY GAMES



BREAKING NEWS™

Unleash your wildest ideas and write headlines that stop readers in their tracks. Craft the funniest, most jaw-dropping headline, the kind that makes everyone say, "Wait...WHAT?!"

Be ready for non-stop laughter and unforgettable game nights!

- A hilarious party game where players take control of the news!
- Create a headline with the wackiest news story you can imagine!
- Perfect for family game nights with up to 6 players.



Product Code: 50015
Box Size: 5.9 L x 8.9 H x 2.5 D (1.10 LBS)
Carton Size: 12.6 L x 9.6 H x 6.7 D (6.6 LBS)
Units/carton: 6





Watch How To Play



SLANGUAGE!™

Test your knowledge and be creative by guessing meanings of common slang words used over the last century. This unconventional party game creates a ton of laughter when players make their best guess to convince the judge that they KNOW the right answer!

***ENGLISH ONLY**

- More than 200 slangs from the last century!
- Fun gameplay for large groups.
- From the renowned game creators April Mitchell and Ed Gartin.



Product Code: 50005
 Box Size: 5.91 L x 9.25 H x 1.50 D (1.50 LBS)
 Carton Size: 12.60 L x 7.09 H x 9.84 D (9.92 LBS)
 Units/carton: 6



PARTY GAMES



PRESTO™

Introducing Bubblo! The cute bubble character from the Go PoP line. Race to pop the bubbles! Complete the challenges on the presto Cards and be the first to tap Bubblo to win the round! Players with quick reflexes, excellent eye-hand coordination and a good sense of observation will prevail in this fun party game for the whole family.

- Includes 4 bubble poppers and 1 Bubblo!
- Develops dexterity and observation.
- The official Pop It party game!



Product Code: GPPRES-BIL
 Box Size: 7.87 L x 8.66 H x 2.76 D (1.19 LBS)
 Carton Size: 16.93 L x 8.46 H x 10.98 D (8.05 LBS)
 Units/carton: 6



CRAZY FARM™

This game illustrated by Elise Gravel promises tons of family fun for young and older players. Who's making all that noise on the farm? Mimic the right animal sounds to become the superstar of the barnyard!

- Illustrated by Elise Gravel.
- Great game for the entire family.
- Laughter guaranteed!



Product Code: 20025
 Box Size: 5.71 L x 7.28 H x 1.77 D (0.62 LBS)
 Carton Size: 11.61 L x 6.50 H x 8.46 D (4.74 LBS)
 Units/carton: 6



CHILDREN GAMES





Watch How To Play



DON'T ROCK THE CROC®

Don't make the crocodile angry! Place the colorful wooden pieces on the croc's belly and make sure it is always balanced. But be careful, if you are not precise you will end up rocking the crocodile causing the wooden pieces to tumble and you will have to start all over. Don't Rock the Croc develops dexterity, color recognition & hand-eye coordination. Suitable for solitary or group play.

- Keep your pieces balanced on the croc!
- Develops fine motor skills.
- Colorful natural wood pieces.



Product Code: CROC-ML10
Box Size: 10.04 L x 8.07 H x 1.18 D (0.75 LBS)
Carton Size: 10.79 L x 10.43 H x 8.74 D (6.17 LBS)
Units/carton: 6





Watch How To Play



LUNCH CRUNCH®

Stay sharp to feed your hungry little monster! Follow the food trail to the right snack and grab it before anyone else - or you will be stuck with an empty lunchbox!

- Develops focus and logical thinking.
- Includes sturdy wooden components.
- Offers two difficulty levels to build skills as you play!



Product Code: 10085
 Box Size: 7.09 L x 9.06 H x 1.78 D (0.84 LBS)
 Carton Size: 10.4 L x 7.8 H x 9.4 D (6.1LBS)
 Units/carton: 6





Watch How To Play



TREASURE OF THE DRAGONS™

The Dragon's cave is full of treasure! Use your memory and observation skills to get all the riches hidden under the stones. Beware of the dragons and the spiders that will try to make you leave empty-handed!

- Created by the board game mastermind Dr. Reiner Knizia.
- A fun memory game with a push your luck element.
- Thick sturdy tiles with colorful artwork.



Product Code: 20055
Box Size: 8.46 L x 8.46 H x 1.97 D (1.37 LBS)
Carton Size: 12.60 L x 9.25 H x 9.25 D (9.48 LBS)
Units/carton: 6





Watch How To Play

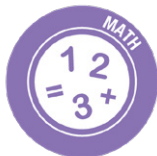


CAN OF WORMS®



In Can of Worms, players use their memory, dexterity and math skills to complete challenges! These friendly worms like to play tricks and might get away before you can make the right combination. Get your hands on this spinning can full of family fun!

- A game of memory and mathematics.
- Tactile fun with 10 wiggly worms!
- Unique can packaging that spins!



Product Code: 10005
 Box Size: 4.37 L x 6.73 H x 4.37 D (0.73 LBS)
 Carton Size: 9.65 L x 7.28 H x 9.65 D (3.48 LBS)
 Units/carton: 4



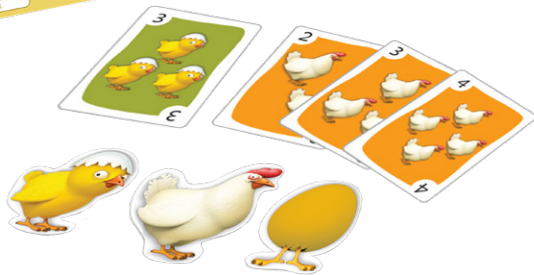


Watch How To Play



CHICKADOO

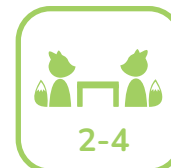
What came first – the chicken or the egg? Or was it the chick?... Lay down the cards in the right order: eggs, chicks and hens. Be the quickest farmer to empty their hands 3 times to win the coveted golden egg! Children will develop their planning and logic skills with this fun family game.



- Quick to learn, easy to play.
- All components are plastic free.
- Develops logical thinking and math skills.



Product Code: 20040
Box Size: 5.70 L x 7.28 H x 1.77 D (0.75 LBS)
Carton Size: 12.40 L x 8.86 H x 6.69 D (5.40 LBS)
Units/carton: 6





HANSEL & GRETEL

Hansel and Gretel were looking for their way back home. Then, an unusual cottage appeared in front of their eyes, made all of candies. The children started to eat when the scary looking witch looked out of the cottage. Hansel and Gretel rushed to run away. Help the kids gather supplies and don't get caught by the evil witch!

- Use the box to move around the board.
- No plastic inside.
- Improves math skills.



Product Code: HANSEL-BIL
 Box Size: 7.48 L x 7.48 H x 1.38 D (0.90 LBS)
 Carton Size: 15.55 L x 9.49 H x 7.99 D (11.02 LBS)
 Units/carton: 6



CINDERELLA

Poor Cinderella... As she watched her mean stepsisters and stepmother leave for the prince's Great Ball, she started crying. All of a sudden, her fairy godmother appeared. Take part in this wonderful tale by helping Cinderella and the fairy godmother gather all the items and characters before the clock ticks midnight!

- Play together against the clock!
- Made from 100% recyclable materials.
- Improves observation and memory.



Product Code: CINDER-BIL
 Box Size: 7.48 L x 7.48 H x 1.38 D (0.79 LBS)
 Carton Size: 15.55 L x 9.49 H x 7.99 D (11.02 LBS)
 Units/carton: 12



ALICE'S ADVENTURES IN WONDERLAND

Don't be late to the Hatter's tea party! Alice and everyone from Wonderland have joined the fun to taste the realm's most delicious cookies. Race your way to get the most cookies and be crowned the tea party champion!

- Fall into the rabbit hole and spin the wheel.
- Lots of characters to choose from.
- Improves logic and math skills.



Product Code: 20020
 Box Size: 7.48 L x 7.48 H x 1.38 D (0.82 LBS)
 Carton Size: 15.35 L x 4.61 H x 7.76 D (5.51 LBS)
 Units/carton: 6





THE LITTLE FIREFIGHTERS

Fire! Quick, The Little Firefighters are on their way!

A fire has started and players must hurry to save the house before it's engulfed by the flames. In this co-operative game, you'll work together to help the firefighters reach the house before the fire does and push the fire back. If you succeed, the victory is shared and the fun is multiplied!

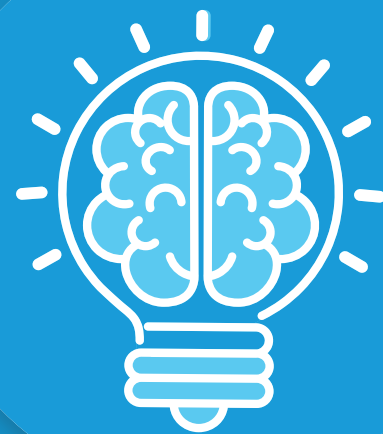
- A cooperative game for young children.
- Includes a Fire Safety Activity Chart!
- Can be played in solo mode.



Product Code: LFF-EN
Box Size: 9.06 L x 12.99 H x 11.61 D
Carton Size: TBD
Units/carton: TBD



EDUCATIONAL GAMES



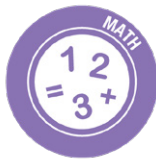


MYSTERO

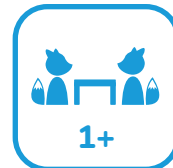
There's a mystery toy in the toy chest!...Can you find it?

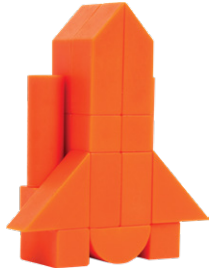
Using visual clues, players decode eight numbers to reveal the ninth. Mystero blends creativity, reasoning and verbal skills into a smart puzzle game like no other.

- Created by math teachers for parents and classrooms.
- Strengthens logic and focus skills.
- Teaches an essential math concept that improves reasoning.



Product Code: 40030
 Box Size: 7.09 L x 9.65 H x 1.57 D (2.01 LBS)
 Carton Size: 11.93 L x 7.76 H x 10.12 D (13.23 LBS)
 Units/carton: 6





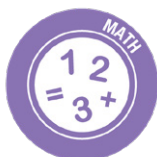
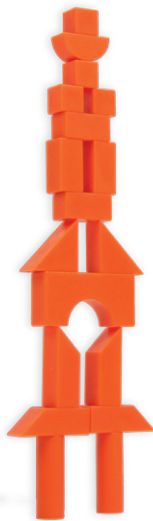
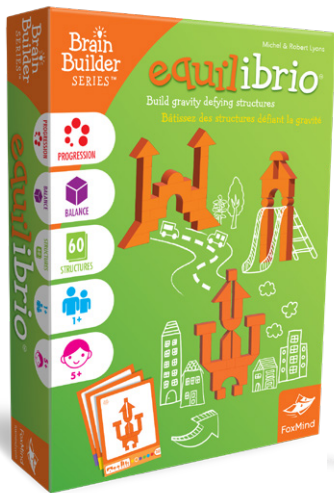
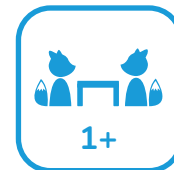
ARCHITECTO®

Players construct 3D models based on illustrations in perspective. From simple shapes to complex structures, players develop stronger notions of geometric concepts and 3D visualisation. While providing solid educational skills, it's also captivating and exciting!

- 50 smart puzzles included.
- Approved by kids, parents and teachers.
- Create new structures!



Product Code: ARCHI-ML9
 Box Size: 7.09 L x 9.65 H x 1.57 D (1.83 LBS)
 Carton Size: 11.93 L x 7.76 H x 10.12 D (11.07 LBS)
 Units/carton: 6



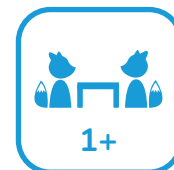
EQUILIBRIO®

Players will need dexterity, ingenuity and perseverance to succeed in building the amazing vertical structures featured in Equilibrio. Some structures may seem almost impossible to do, but careful planning and persistence will always be rewarded with the satisfaction of completing the challenge.

- 60 smart puzzles.
- Approved by kids, parents and teachers.
- Keep your structure in balance!



Product Code: EQUI-ML9
 Box Size: 7.09 L x 9.65 H x 1.57 D (1.83 LBS)
 Carton Size: 11.93 L x 7.76 H x 10.12 D (11.07 LBS)
 Units/carton: 6





Watch How To Play



BY THE BOOK™

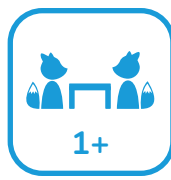
A Novel Stacking Game!

Put together a perfectly balanced bookshelf for our furry friend using a good dose of reasoning and sharp visual perception. The 40 gradually progressing challenges using up to 12 different books will keep you on your toes.

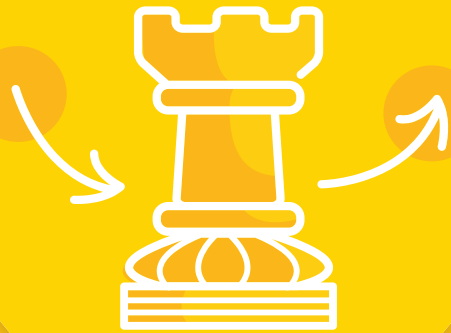
- Includes 3D pieces and an adorable cat figurine.
- A relaxing game to play solo or with friends.
- Progressive challenges that develop logical thinking skills.



Product Code: BTBOOK-BIL
Box Size: 7.09 L x 9.45 H x 2.44 D (1.30 LBS)
Carton Size: 16.34 L x 11.02 H x 8.19 D (9.15 LBS)
Units/carton: 6



STRATEGY GAMES





Watch How To Play



BLAST TRACK!™

Create your roller coaster track with gravity-defying loops, steep slopes and thrilling tunnels that will have the park's visitors go for more than one ride! This tile-laying game offers an ideal introduction to light strategy, appealing to both newcomers and seasoned players alike.

- A strategy game for the whole family.
- Play up to 6 players.
- Build a different grand scale attraction park everytime you play!



Product Code: 10055
Box Size: 9.84 L x 9.84 H x 1.97 D (1.50 LBS)
Carton Size: 11.22 L x 11.42 H x 11.22 D (7.94 LBS)
Units/carton: 4



SPORTS DICE™ BASKETBALL



Sports Dice games are fast paced, easy to learn and quick to play dice games that gives players all the action of a real sports game! Roll your dice, get as much dice with the same symbol and apply the result of the dice. Mark the most points to win the game against your opponent!

- Quick dice rolling games for 2 or 4 players.
- High quality custom dice.
- 5 different sports available.



Product Code: 10080
 Box Size: 4.45 L x 6.22 H x 1.18 D (0.53 LBS)
 Carton Size: 8.66 L x 7.09 H x 5.71 D (3.88 LBS)
 Units/carton: 6

SPORTS DICE™ HOCKEY



SPORTS DICE™ BASEBALL



Product Code: SDHOCK-BIL
 Box Size: 4.45 L x 6.22 H x 1.18 D (0.46 LBS)
 Carton Size: 8.66 L x 7.09 H x 5.71 D (3.48 LBS)
 Units/carton: 6



Product Code: SDBASE-BIL
 Box Size: 4.45 L x 6.22 H x 1.18 D (0.51 LBS)
 Carton Size: 8.66 L x 7.09 H x 5.71 D (3.88 LBS)
 Units/carton: 6

SPORTS DICE™ SOCCER



SPORTS DICE™ FOOTBALL



Product Code: SDSOCC-BIL
 Box Size: 4.45 L x 6.22 H x 1.18 D (0.46 LBS)
 Carton Size: 10.24 L x 7.09 H x 8.86 D (6.13 LBS)
 Units/carton: 12



Product Code: SDFOOTB-BIL
 Box Size: 4.45 L x 6.22 H x 1.18 D (0.46 LBS)
 Carton Size: 8.66 L x 7.09 H x 5.71 D (3.88 LBS)
 Units/carton: 6



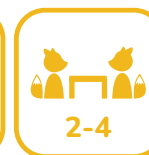
MANHATTAN

Race to build skyscrapers around the world in this game of high-stakes high-rises! Corner the global market by controlling cities, and earn prestige with the tallest tower on earth! On each turn, you can bolster an existing building, break new ground, or take over an opponent's edifice and claim it as your own. Fortunes can change in the blink of an eye, and only the most masterful mogul will come out on top!

- Spiel de Jahres Winner!
- Build a colorful 3D city!
- Easy to learn and fun to play.



Product Code: MANH-BIL
Box Size: 10.63 L x 10.63 H x 2.60 D (0.77 kg)
Carton Size: 15.95 L x 11.50 H x 11.50 D (7.2 kg)
Units/carton: 6



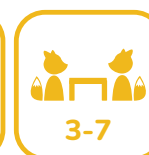
THE POTION

Each alchemist starts with the same basic ingredients; rare mushrooms, secret liquid vials and poisonous beetles. In a match of wit and bluff they compete to get rid of their ingredients and control the final potion. Closely watching each other's move and expression, will you prevail in this unique and original game of deception?

- Push your luck to win!
- Original packaging & high quality pieces.
- Fun family friendly theme.



Product Code: POTION-BIL
Box Size: 5.71 L x 7.87 H x 2.56 D (1.70 LBS)
Carton Size: 12.20 L x 8.27 H x 9.84 D (3.48 LBS)
Units/carton: 12



CANADIAN DISTRIBUTION





Watch How To Play



OUTFOXED

The Golden Egg has gone missing and it's now a chicken chase to crack the case! Move around the board to gather clues and then use the special evidence scanner to rule out suspects. You'll have to work together quickly because the guilty fox is high-tailing it towards the exit!

- Decode clues with the 3D scanner.
- Themed dice and character tokens.
- Develops logical thinking and deduction.



Product Code: 20065
Box Size: 9.45 L x 9.45 H x 2.36 D (1.63 LBS)
Carton Size: 11.81 L x 10.24 H x 10.24 D (12.79 LBS)
Units/carton: 6





EXPLORA

Build the strongest team that will lead you to Eldorado or Atlantis first by bidding strategically. It might be in your best interest to make your opponents bid more than they should and end the game the richest!

- Dynamic rounds.
- Easy to learn.
- Artwork by artist Gaël Lannurien.



Product Code: 40015
Box Size: 6.25 L x 8.5 H x 1.75 D (0.95 LBS)
Carton Size: 12.13 L x 7.68 H x 9.29 D (7.5 LBS)
Units/carton: 6









GAME SPECIFICATIONS



| Product Name | Product Code | UPC/EAN | Box Dimensions (Inches / Kg) | Carton Dimensions (Inches / Kg) | Units/ Carton | Page |
|-------------------------------------|--------------|----------------|-----------------------------------|-------------------------------------|------------------|------|
| Agent Trouble (FR only) | AGENT-FR | 8717344311892 | 7.87L x 7.87H x 1.85D (1.46LBS) | 12L x 9H x 8.8D (9.04LBS) | 6 | - |
| Alice's Adventures in Wonderland | 20020 | 842710002079 | 7.48L x 7.48H x 1.38D (0.82LBS) | 15.35L x 4.61H x 7.76D (5.51LBS) | 6 | 33 |
| Architecto | ARCHI-NB-ML9 | 842710000327 | 7.09L x 9.65H x 1.57D (1.83LBS) | 10.43L x 8.27H x 10.24D (11.02LBS) | 6 | 37 |
| Bermuda Pirates | BPIRAT-BIL | 842710001065 | 9.96L x 9.96H x 1.97D (1.83LBS) | 10.63L x 13.58H x 10.63D (12.13LBS) | 6 | - |
| Bête, La (FR only) | LABETE-FR | 3760205-230752 | 11.54L x 11.54H x 2.76D (3.40LBS) | 12.99L x 12.99H x 12.99D (15.12LBS) | 4 | - |
| Blast Track | 10055 | 842710002185 | 9.84L x 9.84H x 1.97D (1.50LBS) | 11.22L x 11.22H x 11.42D (7.94LBS) | 4 | 40 |
| Boule Poule (FR only) | 50030 | 842710002567 | 7.09L x 9.06H x 1.57D (0.90LBS) | 7.87L x 10.43H x 9.45D (6.17LBS) | 6 | - |
| Breaking News (ENG only) | 50015 | 842710002475 | 5.91L x 8.94H x 1.97D (1.46LBS) | 13.39L x 6.97H x 9.65D (8.77LBS) | 6 | 24 |
| By the Book | BTBOOK-BIL | 842710001843 | 7.09L x 9.45H x 2.44D (1.30LBS) | 16.34L x 11.02H x 8.19D (9.15LBS) | 6 | 38 |
| Can of Worms | 10005 | 842710001935 | 4.37L x 6.73H x 4.37D (0.73LBS) | 9.65L x 7.28H x 9.65D (3.48LBS) | 4 | 31 |
| Cinderella | CINDER-BIL | 842710001805 | 7.48L x 7.48H x 1.38D (0.79LBS) | 15.55L x 9.49H x 7.99D (11.02LBS) | 12 | 33 |
| Chickadoo | 20040 | 842710002147 | 5.71L x 7.28H x 1.77D (0.75LBS) | 12.4L x 8.86H x 6.69D (5.4LBS) | 6 | 32 |
| ChickeBall (ENG only) | 50020 | 842710002536 | 7.09L x 9.06H x 1.57D (0.90LBS) | 7.87L x 10.43H x 9.45D (6.17LBS) | 6 | 22 |
| Chocoly | CHOCO-BIL | 842710001829 | 3.74L x 9.06H x 1.77D (0.73LBS) | 9.45L x 6.3H x 8.27D (5.4LBS) | 6 | 11 |
| Churro Lingo | 10100 | 842710002475 | 3.74L x 9.06H x 1.77D (0.79LBS) | 9.72L x 6.3H x 8.27D (5.2LBS) | 6 | 12 |
| Clac Bluff (FR only) | SBLUFFNEW-FR | 842710001775 | 6.14L x 8.07H x 1.18D (0.31LBS) | 10.63L x 7.48H x 7.87D (4.3LBS) | 12 | - |
| Clac Mots (FR only) | SWORDNEW-FR | 842710001782 | 5.51L x 7.87H x 1.18D (0.33LBS) | 8.66L x 6.3H x 8.66D (2.76LBS) | 6 | - |
| ConeZilla (ENG only) | CNZLA-EN | 842710000495 | 3.74L x 9.06H x 1.77D (0.66LBS) | 8.54L x 10.04H x 6.22D (4.52LBS) | 6 | 11 |
| Crazy Farm (ENG only) | 20025 | 842710002154 | 5.71L x 7.28H x 1.77D (0.62LBS) | 11.61L x 6.5H x 8.46D (4.74LBS) | 6 | 26 |
| Deadlines (ENG only) | DEADL-EN | 842710001881 | 5.63L x 7.36H x 1.77D (0.97LBS) | 11.42L x 6.5H x 7.87D (6.11LBS) | 6 | - |
| Dernière Heure (FR only) | 50016 | 842710002468 | 5.91L x 8.94H x 1.97D (1.46LBS) | 13.39L x 6.97H x 9.65D (8.77LBS) | 6 | - |
| Disruptus | DISRUPT-BIL | 842710001638 | 5.12L x 5.12H x 3.82D (1.06LBS) | 12.2L x 11.02H x 5.71D (7.72LBS) | 6 | 16 |
| Don't Rock the Croc | CROC-ML10 | 842710000884 | 10.04L x 8.07H x 1.18D (0.75LBS) | 10.79L x 10.43H x 8.74D (6.17LBS) | 6 | 28 |
| Donuts by the Dozen | 10050 | 842710002178 | 3.74L x 9.06H x 1.77D (0.75LBS) | 9.72L x 6.3H x 8.27D (5.95LBS) | 6 | 13 |
| Enigma (FR only) | ENIGMA-FR | 4260664070351 | 10.83L x 10.83H x 2.17D (1.61LBS) | 14.88L x 11.89H x 12.09D (11.02LBS) | 6 | - |
| Ensemble (FR only) | ENSEMB-FR | 0745178316910 | 7.28L x 9.06H x 1.77D (1.19LBS) | 15.35L x 9.84H x 11.42D (15.79LBS) | 6 | - |
| Equilibrio | EQUI-NB-ML9 | 842710000334 | 7.09L x 9.65H x 1.57D (1.83LBS) | 10.43L x 8.27H x 10.24D (11.02LBS) | 6 | 37 |
| Explora | 40015 | 0745178316972 | 6.26L x 8.58H x 1.85D (0.95LBS) | 12.13L x 7.68H x 9.29D (7.5LBS) | 6 | 45 |
| Fantasy 2 (FR only) | FANTEXT-FR | 3558380002543 | 3.74L x 3.74H x 0.98D (0.15LBS) | 6.3L x 4.13H x 4.13D (1.37LBS) | 6 | - |
| Forum Trajanum | FORUM-ML13 | 4260071880383 | 11.61L x 11.61H x 3.15D (4.81LBS) | 20.71L x 12.2H x 12.2D (65.04LBS) | 6 | - |
| Grizzy-Jeux de 7 familles (FR only) | 10095 | 3701625913795 | 3.54L x 2.52H x 1.18D (0.24LBS) | 8.46L x 14.57H x 2.56D (3.53LBS) | 10 | - |
| Hansel & Gretel | HANSEL-BIL | 842710001812 | 7.48L x 7.48H x 1.38D (0.90LBS) | 15.55L x 9.49H x 7.99D (11.02LBS) | 6 | 33 |
| Icing on the Cake | CAKE-BIL | 842710001942 | 7.17L x 9.57H x 2.48D (1.43LBS) | 10.63L x 10.04H x 7.68D (6.61LBS) | 4 | 13 |
| Jungle Speed Collector | JSC-BIL | 3558380099420 | 3.31L x 8.27H x 4.33D (1.10LBS) | 8.78L x 9.06H x 10.24D (15.32LBS) | 6 | - |
| Jungle Speed Eco Pack | JSECO-NA | 3558380-078340 | 3.31L x 8.27H x 3.31D (0.71LBS) | 7.09L x 8.78H x 10.39D (4.5LBS) | 6 | 23 |
| Jungle Speed Kids | JSK-BIL | 3558380056683 | 5.91L x 5.28H x 2.95D (0.71LBS) | 9.65L x 6.06H x 12.2D (9.81LBS) | 6 | - |

N = NEW! = Canadian distribution only



GAME SPECIFICATIONS

| Product Name | Product Code | UPC/EAN | Box Dimensions (Inches / Kg) | Carton Dimensions (Inches / Kg) | Units/ Carton | Page |
|---|--------------|---------------|------------------------------------|-------------------------------------|------------------|------|
| Lucky Jack | 30005 | 842710002123 | 5.83L x 3.90H x 1.18D (0.53LBS) | 8.66 x 4.33 x 6.30 (3.31 LBS) | 6 | 19 |
| Lunch Crunch N | 10085 | 842710002437 | 7.09L x 9.06H x 1.57D (0.90LBS) | 7.87 x 10.43 x 9.45 (6.17 LBS) | 6 | 29 |
| Maka Bana (FR only)  | MAKBA-FR | 3760205230400 | 11.42L x 11.42H x 2.64D (2.49LBS) | 17.32 x 12.32 x 12.13 (15.08 LBS) | 6 | - |
| Manhattan | MANH-BIL | 8717344311502 | 10.63L x 10.63H x 2.60D (2.49LBS) | 15.94 x 11.50 x 11.50 (15.90 LBS) | 6 | 42 |
| Marble Garble | 10000 | 842710001980 | 9.57L x 9.57H x 1.38D (1.43LBS) | 10.24 x 9.57 x 10.24 (9.26 LBS) | 6 | 15 |
| Match Madness | MATCH-BIL | 842710000181 | 10.12L x 10.12H x 1.85D (1.70LBS) | 10.83 x 12.40 x 10.83 (11.24 LBS) | 6 | 6 |
| Match Madness Duo | MATCHDUO-BIL | 842710001287 | 8.66L x 8.66H x 1.57D (1.19LBS) | 10.63 x 9.65 x 9.45 (8.38 LBS) | 6 | 9 |
| Match Madness Extreme | MATCHEXT-BIL | 842710000198 | 4.72L x 4.72H x 4.72D (0.55LBS) | 14.96 x 10.24 x 5.12 (4.30 LBS) | 6 | 10 |
| Match Madness Flip | 40025 | 842710002345 | 3.7 L x 8.46 H x 0.79 D (0.42 LBS) | 8.86 L x 4.17 H x 5.31 D (6.08 LBS) | 6 | 7 |
| Match Madness Junior | MATCHJR-BIL | 842710001904 | 7.87L x 7.87H x 2.80D (1.39LBS) | 16.34 x 12.60 x 8.27 (10.76 LBS) | 6 | 8 |
| Memo Rush | MEMORU-BIL | 8427100001294 | 7.76L x 9.72H x 2.24D (1.23LBS) | 14.57 x 10.63 x 8.66 (8.44 LBS) | 6 | 16 |
| Meta Forms | MFLB-ML9 | 842710000372 | 10.83L x 8.98H x 1.54D (1.96LBS) | 11.61 x 11.02 x 9.45 (11.79 LBS) | 6 | - |
| Mots Rapido (FR only) | SPEEDY-FR | 842710000471 | 4.13L x 4.13H x 1.85D (0.44LBS) | 9.06 x 6.69 x 4.92 (3.31 LBS) | 6 | - |
| Mots Rapido Twist (FR only) | SPTWIST-FR | 842710001720 | 4.13L x 4.13H x 1.85D (0.44LBS) | 8.86 x 6.69 x 8.86 (6.39 LBS) | 6 | - |
| Mystero-ML N | 40030 | 842710002420 | 7.09L x 9.65H x 1.57D (2.01LBS) | 11.93 x 7.76 x 10.12 (13.23 LBS) | 6 | 36 |
| Nom d'un Renard - Outfoxed (FR only)  | 20060 | 7640142762010 | 9.45L x 9.45H x 2.36D (1.63LBS) | 11.81 x 10.24 x 10.24 (12.79 LBS) | 6 | - |
| Outfoxed-BI N  | 20065 | 842710002529 | 9.45L x 9.45H x 2.36D (1.63LBS) | 11.81 x 10.24 x 10.24 (12.79 LBS) | 6 | 44 |
| Pantolino (FR only)  | PALINO-ML13 | 4260071882219 | 5.04L x 5.04H x 1.65D (0.60LBS) | 10.87 x 8.78 x 5.43 (13.89 LBS) | 10 | - |
| Pick a Brick | BRICK-ML10 | 8717344311168 | 9.84L x 9.65H x 1.57D (1.65LBS) | 10.79 x 10.43 x 8.74 (11.68 LBS) | 6 | - |
| Potion, The | POTION-BIL | 8717344311649 | 5.71L x 7.87H x 2.56D (0.22LBS) | 12.20 x 8.27 x 9.84 (3.48 LBS) | 12 | 42 |
| Poulpyz (FR only)  | POULPYZ-FR | 4650000323355 | 5.63L x 5.63H x 1.85D (0.29LBS) | 17.91 x 12.20 x 11.81 (24.25 LBS) | 36 | - |
| Presto | GPPRES-BIL | 842710000860 | 7.87L x 8.66H x 2.76D (1.21LBS) | 16.93 x 8.46 x 9.45 (8.16 LBS) | 6 | 26 |
| Racing Hedgehogs | RACHED-BIL | 842710001744 | 8.43L x 8.43H x 1.97D (1.12LBS) | 13.39 x 9.84 x 9.45 (8.71 LBS) | 6 | - |
| Rivalry (FR only)  | RIVA | 0745240307976 | 9.92L x 9.92H x 1.77D (1.54LBS) | 11.61 x 10.63 x 10.63 (10.36 LBS) | 6 | - |
| Slam Bluff (ENG only) | SBLUFFNEW-EN | 842710001683 | 6.14L x 8.07H x 1.18D (0.31LBS) | 10.63 x 7.48 x 7.87 (4.30 LBS) | 12 | - |
| Slam Words (ENG only) | SWORDNEW-EN | 842170001126 | 5.51L x 7.87H x 1.18D (0.33LBS) | 8.66 x 6.30 x 8.66 (2.76 LBS) | 6 | 20 |
| Slanguage (ENG only) N | 50005 | 842710002130 | 5.91L x 8.94H x 1.97D (1.50LBS) | 12.60 x 7.09 x 9.84 (9.92 LBS) | 6 | 25 |
| Speedy Words-PDQ (ENG only) | 10011 | 842710-002062 | 3.70L x 8.43H x 0.75D (0.29LBS) | 5.51 x 9.84 x 4.72 (2.43 LBS) | 6 | 18 |
| Speedy Words-Tin (ENG only) | SPEEDYNEW-EN | 842710000464 | 4.13L x 4.13H x 1.85D (0.44LBS) | 9.06 x 6.69 x 4.92 (3.31 LBS) | 6 | 18 |
| Speedy Words Twist (ENG only) | SPTWIST-EN | 842710001713 | 4.13L x 4.13H x 1.85D (0.44LBS) | 8.86 x 6.69 x 8.86 (6.39 LBS) | 12 | - |
| Sports Dice Baseball | SDBASEB-BIL | 842710001041 | 4.45L x 6.22H x 1.18D (0.53LBS) | 8.66 x 7.09 x 5.71 (4.03 LBS) | 6 | 41 |
| Sports Dice Basketball | 10080 | 842710002307 | 4.45L x 6.22H x 1.18D (0.51LBS) | 8.66 x 7.09 x 5.71 (3.53 LBS) | 6 | 41 |
| Sports Dice Football | SDFOOTB-BIL | 842710001058 | 4.45L x 6.22H x 1.18D (0.46LBS) | 8.66 x 7.09 x 5.71 (3.95 LBS) | 6 | 41 |
| Sports Dice Hockey | SDHOCK-BIL | 842710001911 | 4.45L x 6.22H x 1.18D (0.44LBS) | 8.66 x 7.09 x 5.71 (3.48 LBS) | 6 | 41 |
| Sports Dice Soccer | SDSOCC-BIL | 842710001034 | 4.45L x 6.22H x 1.18D (0.44LBS) | 8.66 x 7.09 x 5.71 (3.55 LBS) | 6 | 41 |



GAME SPECIFICATIONS



| Product Name | Product Code | UPC/EAN | Box Dimensions (Inches / Kg) | Carton Dimensions (Inches / Kg) | Units/ Carton | Page |
|---|--------------|---------------|----------------------------------|------------------------------------|------------------|------|
| Swish | 10075 | 842710002291 | 4.33L x 7.87H x 1.57D (0.51LBS) | 10.04L x 9.06H x 5.31D (3.51LBS) | 6 | 14 |
| Tac Tac Jack | JACK-BIL | 8717344311977 | 7.09L x 10.39H x 3.74D (1.15LBS) | 15.75L x 7.87H x 10.98D (5.03LBS) | 4 | - |
| Tangramino | TANG-ML9 | 842710000358 | 10.83L x 8.98H x 1.54D (2.36LBS) | 11.65L x 9.84H x 10.24D (14.88LBS) | 6 | - |
| The Little Firefighters  | LFF-EN | 842710001799 | 9.06 L x 12.99 H x 11.61 D (TBD) | (TBD) | (TBD) | 34 |
| Tintouin (FR only) | 20026 | 842710002239 | 5.71L x 7.28H x 1.77D (0.62LBS) | 11.61L x 6.50H x 8.46D (4.74LBS) | 6 | - |
| Treasure of the Dragons | 20055 | 842710002253 | 8.46L x 8.46H x 1.97D (1.37LBS) | 12.60L x 9.25H x 9.25D (9.48LBS) | 6 | 30 |
| Triplet' & cacahouët' (FR only)  | 10025 | 3437012108993 | 4.92L x 4.92H x 1.57D (0.53LBS) | 10.24L x 5.71H x 5.51D (3.62LBS) | 6 | - |

RETAILER EXCLUSIVITY

| | | | | | | |
|-------------------------|-------|--------------|----------------------------------|-------------------------------------|-----|---|
| Match Madness XL | 10060 | 842710002260 | 12.52L x 5.12H x 9.88D (4.12LBS) | 20.31L x 11.02H x 12.99D (17.06LBS) | N/A | - |
| Match Madness Junior XL | 10065 | 842710002277 | 10.16L x 5.12H x 9.88D (3.26LBS) | 20.31L x 11.02H x 10.71D (14.20LBS) | N/A | - |

NOTES

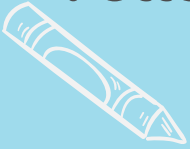




Let's stay connected.

Follow us on social media for the latest updates!

@FoxMindGames



FOXMINDGAMES



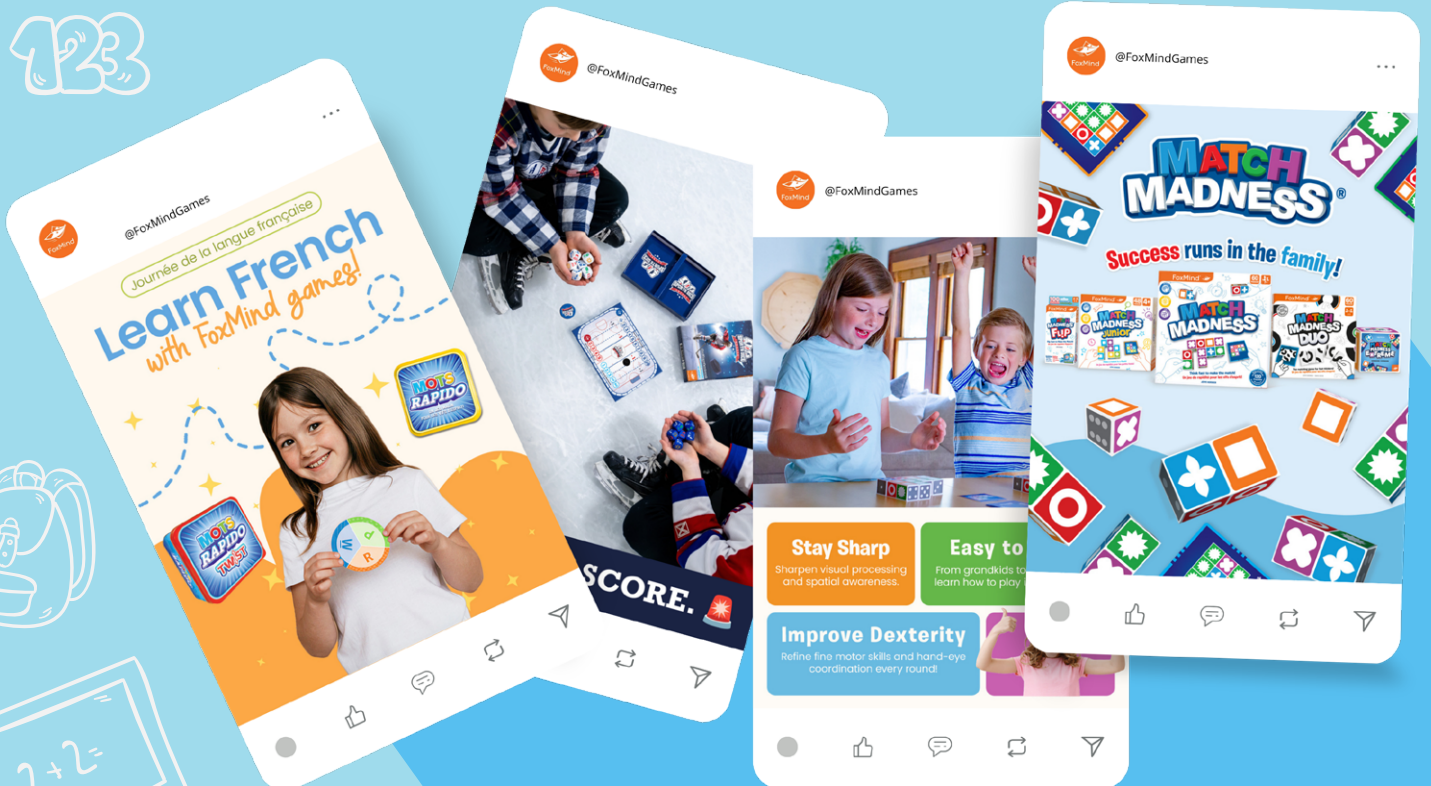
FOXMIND TOYS & GAMES



FOXMINDGAMES



123





Smarter fun[®]



FOXMINDGAMES



FOXMIND TOYS & GAMES



FOXMINDGAMES

FOR OUR LATEST NEWS VISIT:
www.foxmind.com

