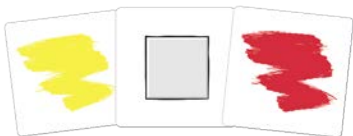


4+ 2-6 15 min

# EyeDentify™

## Contents



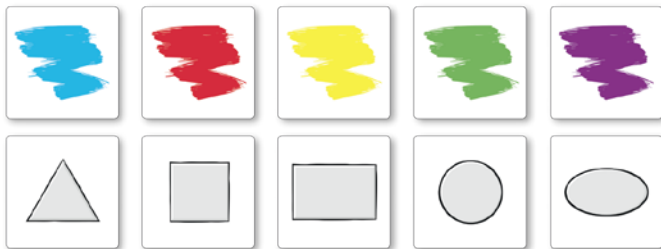
60 double sided cards  
Game rules

## Game Objective

On one side, the cards have a picture (a "scene"), which includes all the 10 shapes and colors.



The opposite side of the cards has 1 out of the 10 symbols : A color (blue, red, yellow, green, purple) or a shape (triangle, square, rectangle, round, oval).



Each turn, a card is flipped and reveals a scene. Players must find the element in the scene that matches the one on top of the card deck. First one to spot the element wins the card and a new card is flipped. Collect as many cards as you can to win.

### Set Up

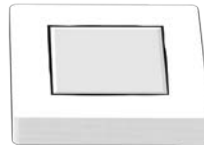
Shuffle the cards (make sure all the cards face the same direction). Place the cards in the middle of the table, symbol side facing up.



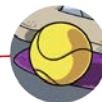
### How to Play Eyedentify

Each player, on their turn, flips the top card and place it next to the deck. He/ she then calls out the shape or color revealed on the top card of the deck. In the following example, players need to find something that has a square shape:

Identify  
something  
that is square



Whoever finds it calls out loud the name of the element in the scene and points it out to the rest of the players. If that player is right, they win the card.

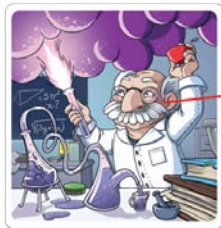


The Ball

**Example:** A player flips the first card and reveals the following picture (cat and dog). The card on the pile indicates that players need to find something round. The first player to call out the tennis ball wins the flipped card.

**Making a mistake:** If a player calls out the wrong element, the other players get another chance to identify the element while the player that was wrong waits for the next card to be flipped.

**Notes:** Elements appear only one time on each card (see the Answers on the following pages). All shapes are entirely visible and seen from a front view. A shape and a color can be part of a same element.

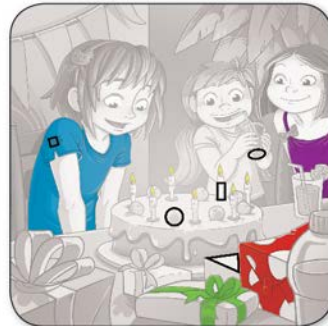
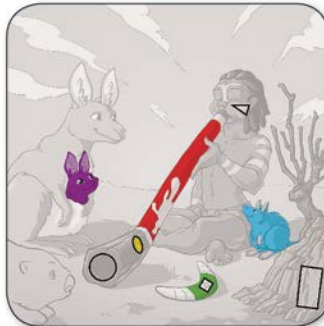


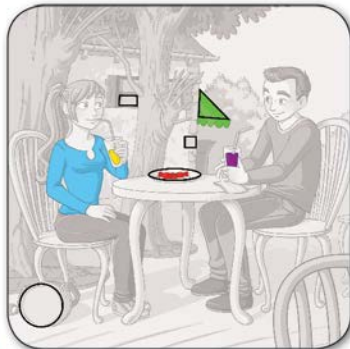
**Example:** On the chemist's picture, the only round shape visible is the right side of his glasses. The left glass is partially hidden by his nose.

### Game End

The game ends when there is only one card left. The winner is the player that collects the most cards. In case of a tie, the players share the win.

## ANSWERS!



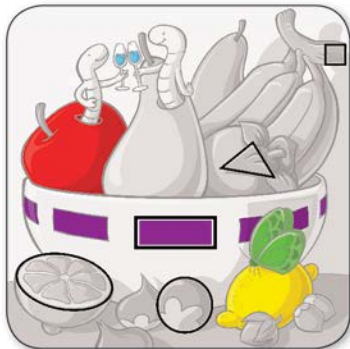






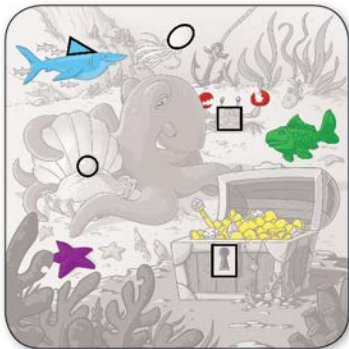














**©2017 Advance Games  
© FoxMind Canada Ltd.  
All rights reserved**

**Published by :  
Advance Games**

**Exclusive Distribution North America :**

**FoxMind Canada Entreprises Ltd.  
1104-5530 St-Patrick, Montréal, Qc, H4E 1A8, CANADA**

**A game by :  
TREO GAME DESIGNERS**

